

PROTOCOL FOR REOPENING THE UNITS OF PEPE

INTRODUCTION:

The reopening of the units must happen following the government's guidelines of each country, about the activities' return.

PEPE's coordination of each country or region must guide the churches, pastors, missionaries and missionary-educators, children and their families for this new moment.

1° CARE WITH CHILDREN



- 1** | Parents must be consulted about their children's return to PEPE.
- 2** | It is advised that the initial number of children to be assisted be half of the previous number assisted. For example, where there were 20 children, now must be only 10.
- 3** | It could be adopted a rotation system with half of the children coming one day and the other half next day.

1° CARE WITH CHILDREN



4 | Children must wear masks during the whole period while they are at the unit of PEPE.

5 | Children must wash their hands when arriving at PEPE, using water and soap or using hand sanitizer with 70% alcohol. During the activities, children and also missionary-educators must repeat sometimes more the act of washing or sanitizing hands.

6 | Parents must inform PEPE unit if there is at home any relative stricken by Covid-19. If positive, they must be guided to leave the child at home for 14 days, respecting the quarantine period.

1° CARE WITH CHILDREN



7 | The health condition of children must be checked when arriving at PEPE. In case of fever, cough or flu symptoms, the guardian must be guided about the need of returning home with the child.

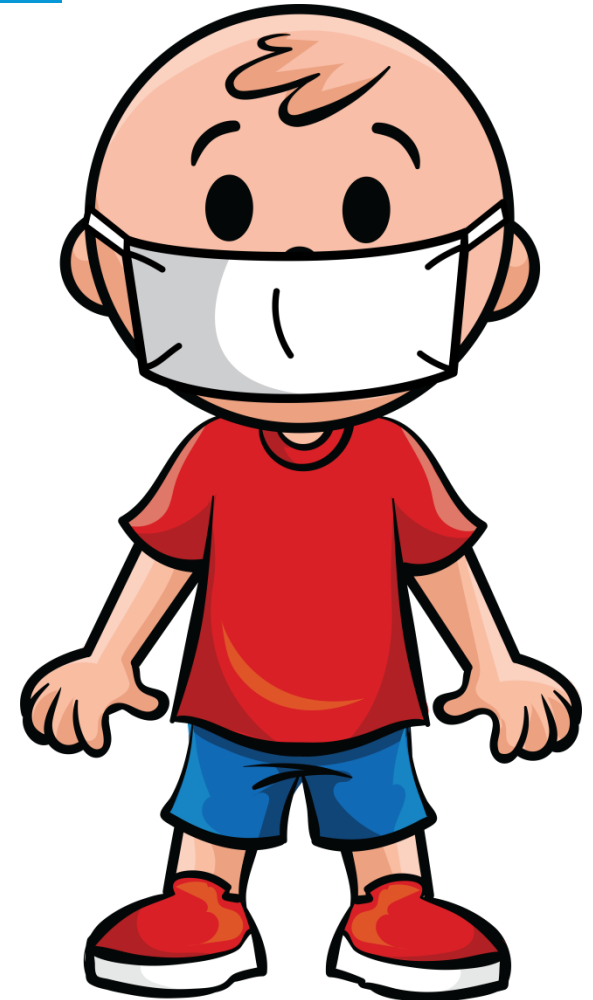
8 | If possible, check the temperature of each child arriving at the unit. If any child presents fever, with the temperature over 37.5°, he/she shall return home.

9 | It must be observed if any child or family needs food assistance. If so, the ones that are able to contribute to promote this assistance will be mobilized, it can be: the church itself, partner organizations, business men of the region, etc.

10 | It must be always considerate children and their families' well-being.

2° THE CLASSROOM AND OTHER UNIT'S ENVIRONMENT

- 1** | The classroom and other closed environments used by children must be ventilated and sanitized.
- 2** | It must be analyzed the possibility of using larger environments to work the activities with children, like the temple, for example.
- 3** | Whenever it is possible, must give priority for outdoor's activities.



3° COORDINATORS, MISSIONARY-EDUCATORS AND VOLUNTEERS

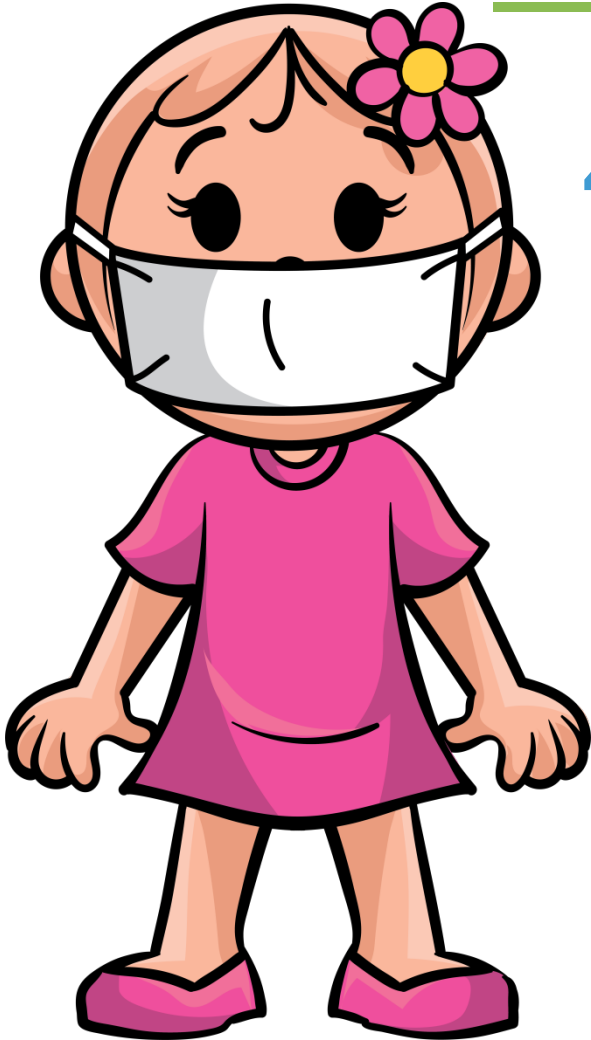


1 | Missionary-educators and volunteers must wear masks during the whole working period.

2 | Missionary-educators that are part of the risk group (the ones with co morbidities and above 60 years-old) must be away of the presential activities of the PEPE unit, being able to assist from their homes, elaborating and preparing activities that will be done by children.

3 | In preparing lunch, it must be observed all the environment, products and people's measure's sanitation.

3° COORDINATORS, MISSIONARY-EDUCATORS AND VOLUNTEERS



4 | The lunch must be individually served to each child.

5 | The daily routine must include welcoming and herding the child, and also observing and evaluating the emotional and physical health condition of the child.

6 | We suggest that are done with priority the relaxation activities, movement, music, arts, etc. It will be of great value for the child development.

7 | It must be daily recorded how the child is leading with the information received. And also it must record what she is living during this moment as well as the quarantine period.

3° COORDINATORS, MISSIONARY-EDUCATORS AND VOLUNTEERS



8 | Images must be used to illustrate the main preventive guidelines of Covid-19. And must be used PEPE's cards previously shared.

9 | After the government permission, the activities' return should not be hushed. It is necessary to wait a few days to do it safely.

10 | It is necessary planning and preparation to return.

11 | It must be considerate that after the activities return, it is still possible the returning of restrictive measures in certain cities, in case it is verified the increase of Covid-19 cases.

The decision of each family about sending their children for the unit of PEPE must be respected. PEPE's Program has as its purpose to promote a safe place for the child's development, and it directly involves the child health, the missionary-educators, volunteers, families and community in general.

Our commitment is to welcome, herd, care, speak and show God's love for children, their families and the community.

Efficiency Committee of PEPE Network's Board of Directors
Adaptation: Executive Committee of PEPE International